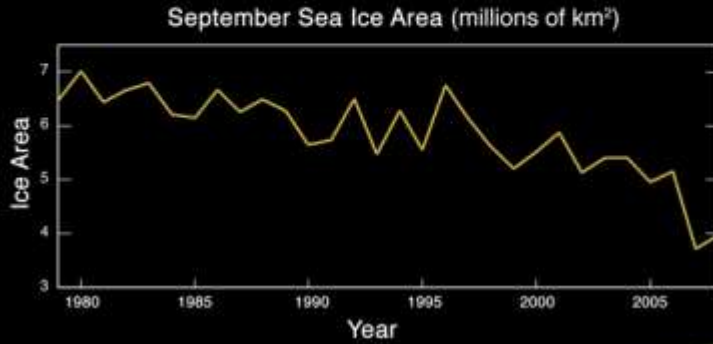
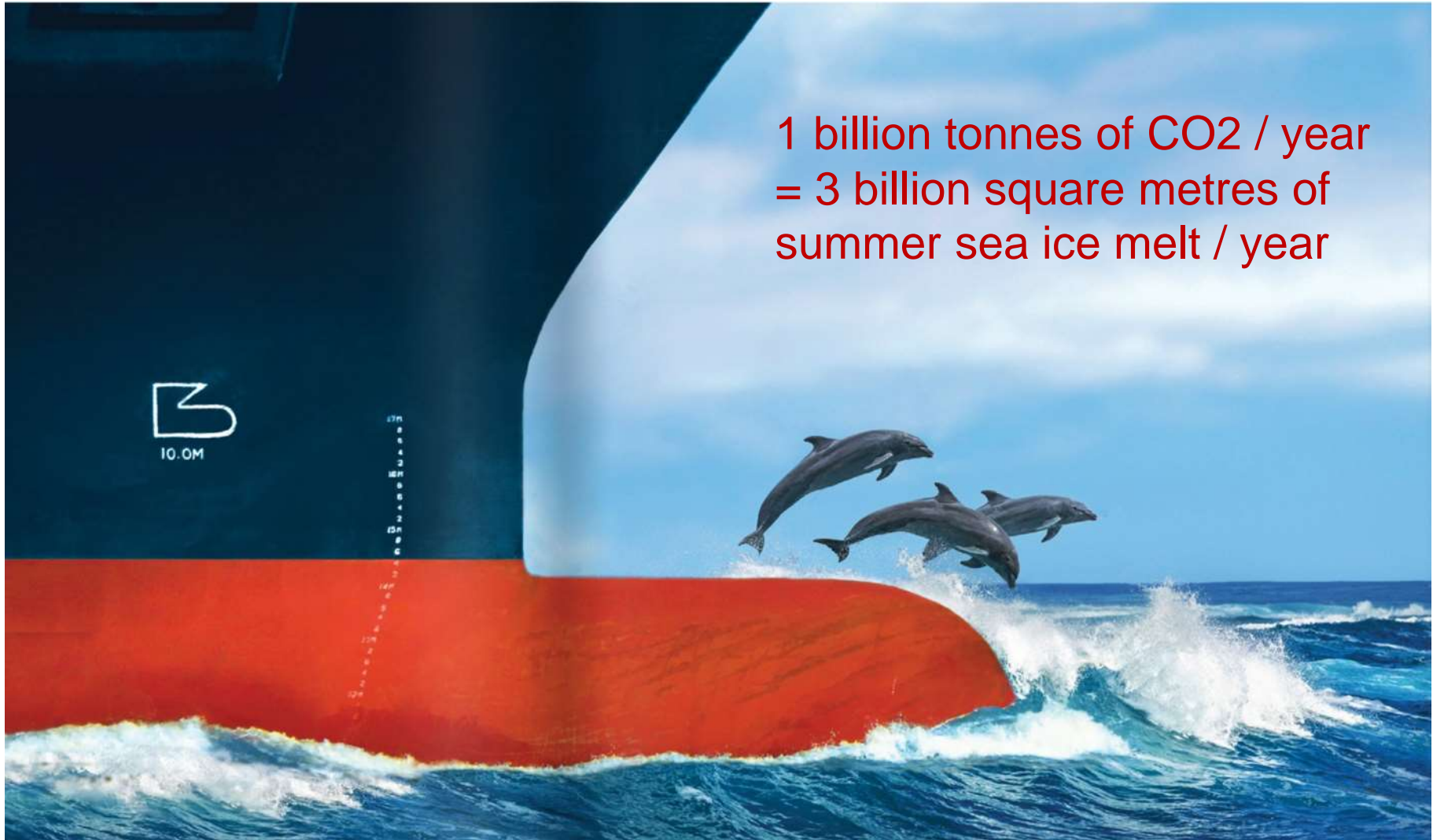


Sea ice going, going, gone!





Measuring sea ice thickness





Satellites now get full-year view of Arctic sea-ice



Jonathan Amos
Science correspondent
@BBCAmos

🕒 20 hours ago

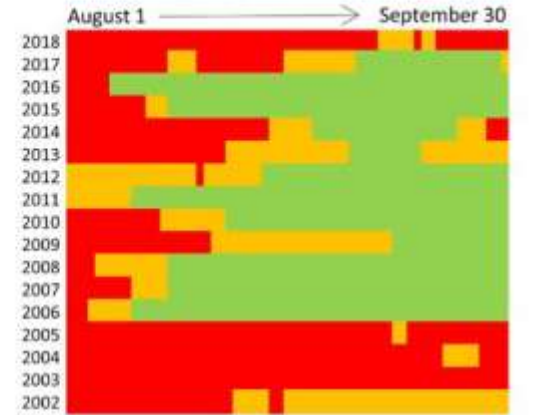
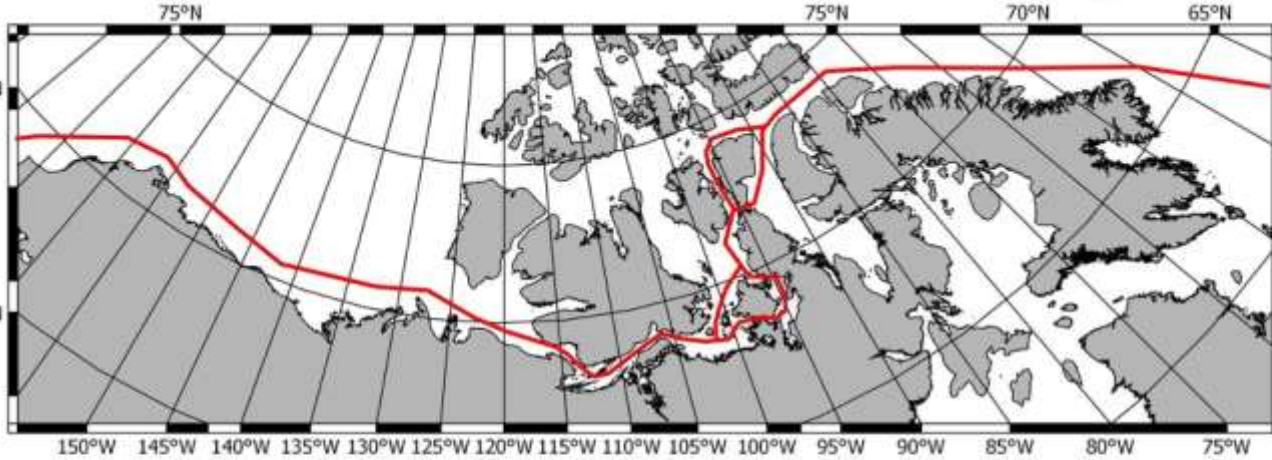


Climate change



Navigability in summer

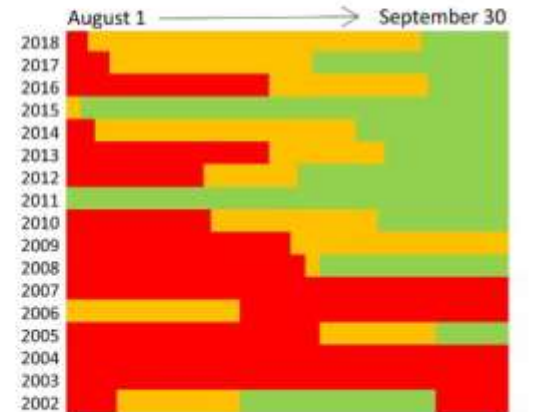
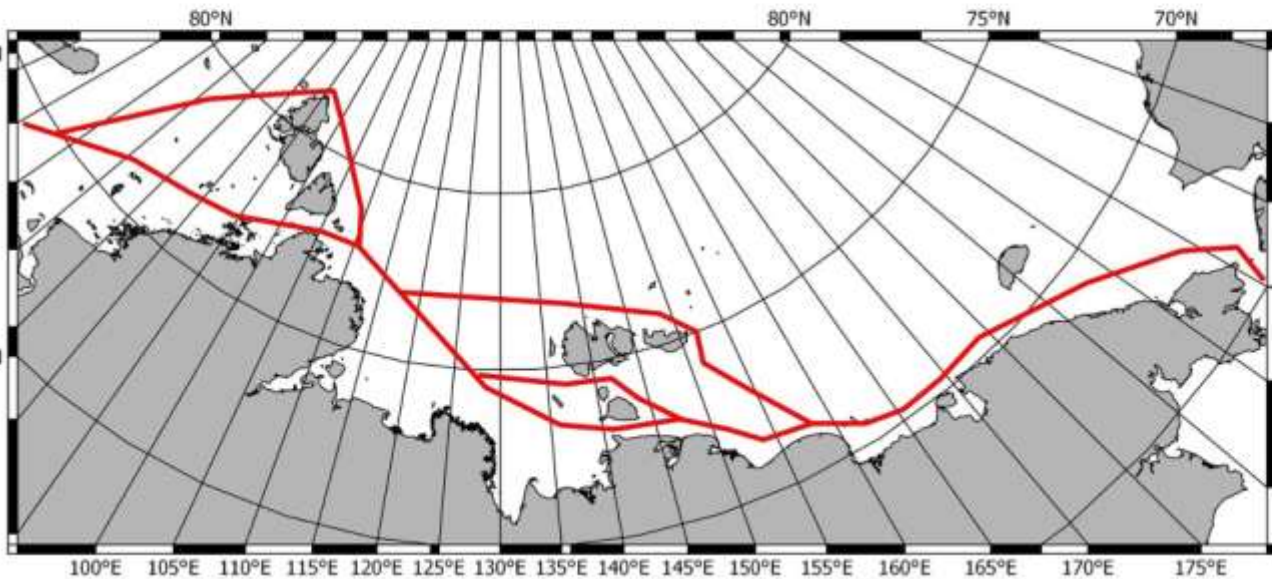
North West Passage



■ : closed with ice ■ : ice free

■ : intermediate stage, trafficable for Polar Class 6

Northern Sea Route



Hydra flag to the North Pole!

 **UCL**



ΑΔΕΛΦΟΤΗΣ ΥΔΡΑΙΩΝ ΑΘΗΝΩΝ
ΕΤΟΣ ΙΔΡΥΣΕΩΣ 1890

